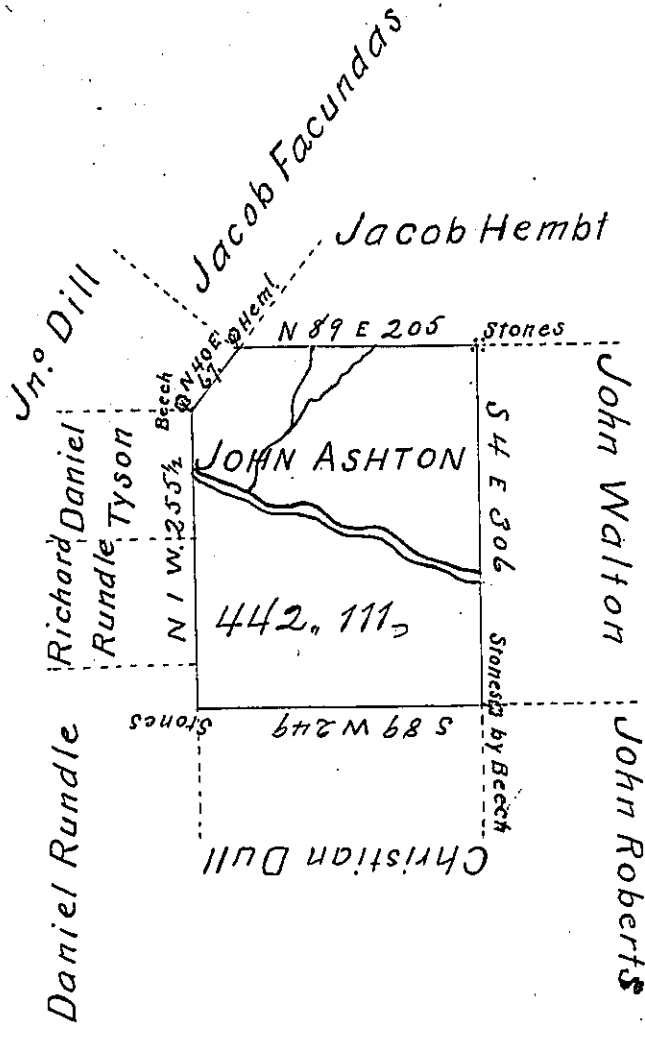


Greene -  
PIKE,  
✓



In pursuance of an Order dated April 4<sup>th</sup> 1808,  
Resurveyed Sep<sup>r</sup> 26<sup>th</sup> 1809 the above described  
Tract of Land from an Original Survey to John  
Ashton Situate on the waters of Wallenpaupack  
Creek in Salem Township Wayne County,  
Containing four hundred and forty two Acres,  
one hundred and eleven perches, and Allowance  
of six <sup>1</sup>/<sub>4</sub> Cent.

E. Kellogg, D.S.

To Andrew Porter Esq }  
Surveyor Gen<sup>l</sup> }

IN TESTIMONY that the above is a copy of the original remaining on file in  
the Department of Internal Affairs of Pennsylvania, made  
conformably to an Act of Assembly approved the 16th day of  
February, 1833, I have hereunto set my Hand and caused  
the Seal of said Department to be affixed at Harrisburg,  
this fourth day of August 1903

Isaac D. Brown  
Secretary of Internal Affairs.